

# Local Government Reorganisation

---

April 2026

# Governance in the UK

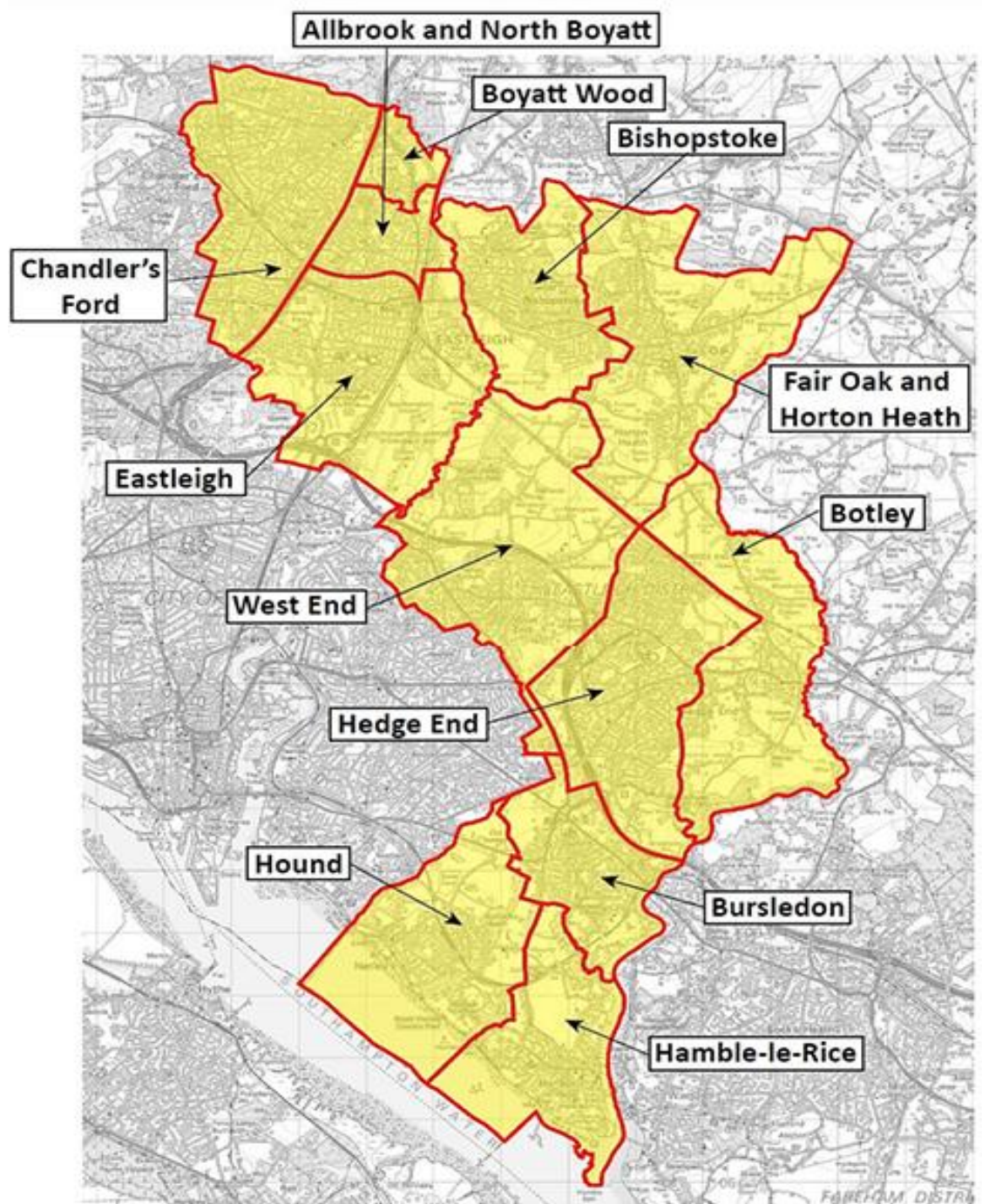
---

Multi-layered system:

- Tier 1 - The Crown
- Tier 2 – Westminster
- Tier 3 – Devolved Nations
- Tier 4 – Local Government
  - Two-tier – District and County
  - One tier - Unitary
  - Combined Authorities - Mayoral

---

# Eastleigh Borough - Parishes



# What is Local Government Reorganisation?

---

- Process of replacing England's two-tier council system with single-tier unitary authorities.
- Will affect 21 county council areas.
- Expected to create around 55 unitary councils by 2028.
- It changes how council tax is set, who delivers local services, how residents are represented.
- Average duration of process 18-30 months.
- Parish Councils are not directly impacted by LGR.

# Differences between Council Types

---

## District (Lower Tier)

- Planning
- Housing and Homelessness
- Waste Collection
- Environmental Health
- Leisure and Community Facilities
- Council Tax and Business Rates Collection

## County (Upper Tier)

- Education
- Highways and Transport
- Social Care
- Public Health
- Libraries
- Trading Standards
- Waste Disposal

# Hampshire Local Government Re-organisation

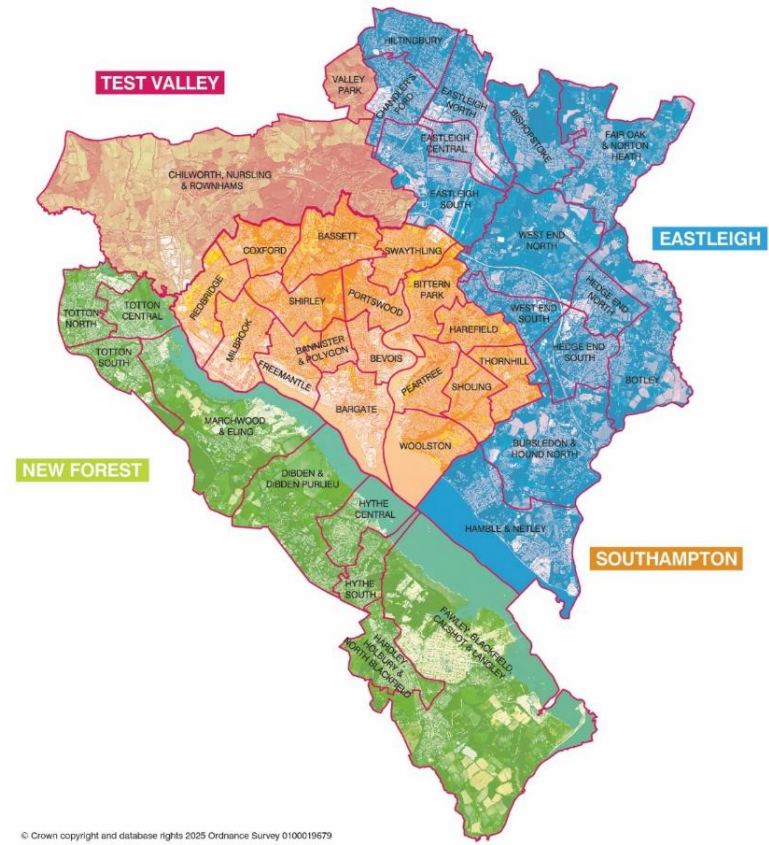
---



# The Chosen Option

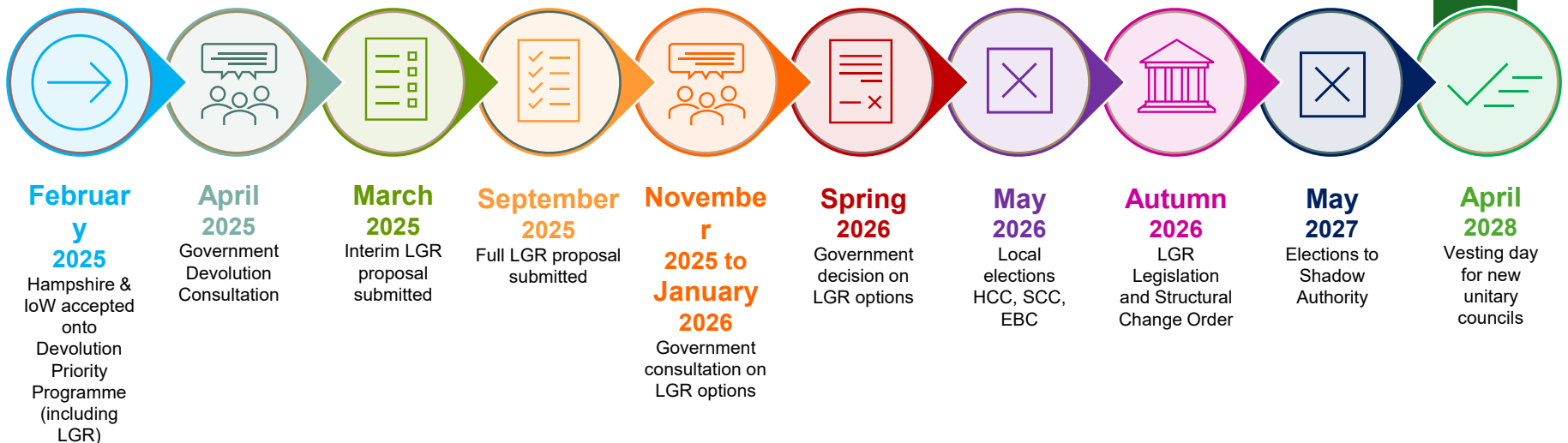
2028 forecast population: 510,102

Brings together  
Southampton, Eastleigh,  
the Waterside  
communities and nearby  
Test Valley parishes –  
reflecting how people  
actually live, work and  
travel



# What Happens Next

- Joint committees will be set up to begin the transition work
- Government brings forward the Structural Change Order
- Shadow council elections in May 2027 will create the new 'authorities-in-waiting'
- Existing councils continue until vesting day
- **Residents should see no immediate change to services**



# What Stays the Same for Botley Parish Council

---

- Unlikely to see significant change on Day One.
- Parish Councils will remain the same.
- Parish powers and duties will remain unchanged.
- The role as the voice of the local community also remains.
- Model of Local Area working may change, but the principle of local engagement will remain.

# What Changes for Botley Parish Council

---

- Will work with one principal authority instead of two.
- Some services may be delivered differently.
- Unitaries may decide to devolve very local functions to parish councils.
- Following current progress of Community Asset Transfers, residents will see more assets owned and managed at the most local level.

# Possible Challenges

---

- Disruption during transition period
- Changes in contacts and processes
- Potential pressure on local service during bedding-in period
- Need for parishes to adapt to new ways of working

# Practical Preparations

---

- Stay informed
- Strengthen your governance
- Strengthen relationships
- Be clear on local priorities
- Consider further opportunities for devolution

# Conclusion

---

- Local Government Reorganisation is the most significant change since 1965.
- It creates an opportunity for a more empowered and community-focused local government landscape.
- Parish Councils have a critical role to play as:
  - A democratic voice of local communities
  - Partners in service delivery
  - Champions of local identity and place
- Working together, we can ensure that reorganisation strengthens local democracy ensuring our residents can engage with, and influence, local decision-making.